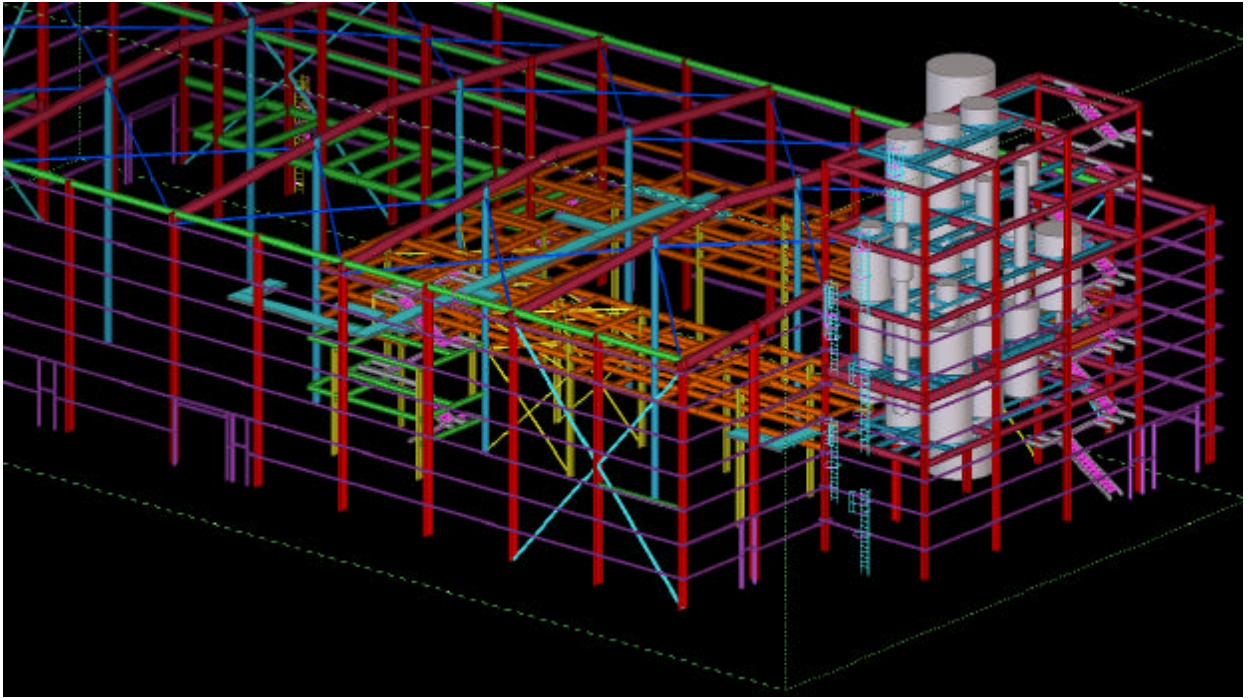


# MAIN PRODUCTION BUILDING - ETHANOL PLANT EXPANSION

---

Husky Energy

Lloydminster, Saskatchewan



## Project Description

The three dimensional engineering drawing arrangement of the Main Production Building (1300 Tons Structural Steel, 400 Tons of Miscellaneous Steel) was developed using X-STEEL (Tekla Structures). Following approval of the arrangement, shop drawing preparation was ifast trackedî using the X-STEEL software.